



sonett

ECOLOGICALLY CONSCIENTIOUS

How to protect natural water resources, the essence of all life: **Guide for ecological washing**

Contents

- Sonett Products are unique! . . . 2
- Sonett Laundry Detergents are gentle on nature 4
- Laundry Detergents and Cleaning Agents 6
- The Product Range “Sensitive” for people with allergies 12
- That’s how your laundry is done properly! 14
 - Separating the laundry
 - Filling the machine
 - Drying the laundry
 - Sportswear and microfibres
 - Down jackets and pillows
 - Sheep skins
- Choosing the right detergent 16
- Stain removal tips 18



Sonett Products are unique!

Doing your laundry in an ecologically consistent and perfect manner

They make the difference:
The 7 balsamic additives in
Sonett Laundry Detergents



frankincense



gold



myrrh resin



laurel leaves



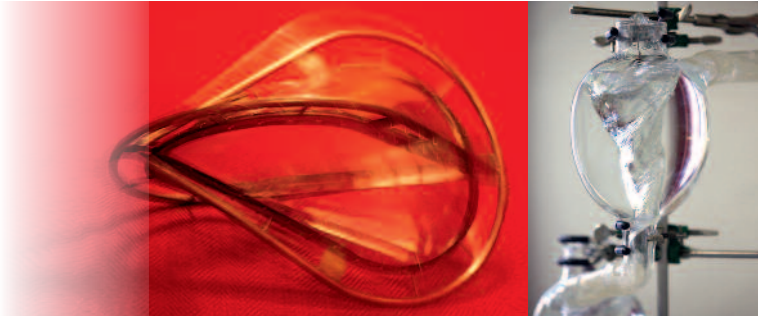
olive oil



rose salt



mistletoe



Sonett's own manufacturing process may well be declared as being "bio-dynamic":

Frankincense, gold, myrrh resin, laurel leaves, olive oil, rose salt and mistletoe are being swirled in an oloid mixer in a figure-of-eight movement. All Sonett products are "vaccinated" with the balsamic additives rhythmatised in this way. A "life-fostering" lemniscatic movement impulse is thus added to the neutralization of the surface tension of water necessary for washing. Furthermore the entire processing water is being treated by passing through a swirl chain of 12 egg-shaped glass vessels, forming free-flowing beautifully shaped vortexes. Sonett products are fully biodegradable.

Contrary to other laundry detergents and cleaning agents the Sonett Products are without any petrochemical surfactants or enzymes. Sonett Products contain no synthetic fragrances, dyestuffs and preservatives. All oils and essential oils are 100 % obtained from certified organic respectively bio-dynamic cultivation. It goes without saying that all Sonett Products are without genetic engineering and nanotechnology, and no animal testing is used in their manufacture.

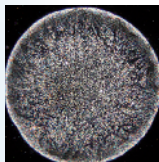
For more info, see www.sonett.eu



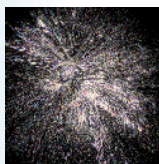
Sonett Laundry Detergents

protect natural water resources,
the essence of all life

Cristal pattern *
of Sonett's rhythmatised detergent additive
20fold enlarged



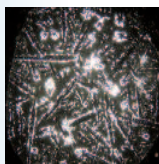
Cristal pattern *
of Sonett's laundry powder
20fold enlarged



Cristal pattern *
of Sonett's laundry powder
200fold enlarged



Cristal pattern *
of a "mega-pearl" laundry detergent
20fold enlarged





Sonett Laundry Detergents are gentle on nature and natural water resources.

Conventional laundry detergents and cleaning agents contain petrochemical substances that often are difficult to biodegrade or may not be biodegradable at all, thus becoming concentrated in water. **Sonett Laundry Detergents contain no petrochemical raw materials.**

Sonett Laundry Detergents help people with allergies.

Ingredients alien to nature and humans attack the skin thus causing allergic reactions. Almost all of the enzymes, hitherto used in laundry detergents, for years have been obtained from GMOs. **Sonett Laundry Detergents are free of enzymes, genetic engineering as well as synthesized fragrances and dyestuffs.**

Sonett Laundry Detergents support agriculture which uses no monocultures, pesticides and synthetic fertilizers.

Many laundry detergents contain raw materials that are industrially cultivated in large monocultures using enormous amounts of chemical agents, thus polluting the soil, the air and the water. **Sonett Laundry Detergents contain vegetable soaps that are exclusively manufactured using oils obtained from certified organic cultivation.**



Laundry detergents and cleaning agents:

Products of unique quality, protecting natural water resources, the essence of all life

Washing with the Sonett Modular System

The 3 components of the Sonett Modular System

- 1 Laundry Powder or Laundry Liquid
- 2 Softener
- 3 Bleach Complex

In traditional heavy duty detergents, the detergent, softener and bleaching agent are all mixed into one component. If the components are separate from each other, as is the case with the Sonett Modular Washing System, the respective detergent may be used in ideal dosage, according to the local water hardness and the degree of soiling—**this being the most economical and ecological way of doing your laundry.**

Sonett Laundry Detergents are suitable for HE washing machines.



Component 1 in the Sonett Modular System

40–95 °C (100–200 °F) Concentrated Laundry Powder

Suitable for all textiles made from cotton, linen, hemp and fabric blends. The main active ingredient of the Sonett Laundry Powder is pure organic vegetable soap. Soap is the cleansing substance coming closest in its properties to man and nature. It chemically reacts with the calcium present in waste water thus auto-disposing of itself. 100 % biodegradable. Fragrance-free and vegan.

□ Ingredients: soap from vegetable oils*, soda, silicates, zeolite, coconut oil alcohol sulphate, clay minerals, balsamic additives* (*certified organically grown/ collection from wild-growing plants)

□ Available: 1.2 kg, 2.4 kg, 10 kg



Component 1 in the Sonett Modular System

30–95 °C (85–200 °F) Laundry Liquid Lavender

Suitable for all textiles made from cotton, linen, hemp and fabric blends. Without petrochemical surfactants, no enzymes (GMO). Use Sonett Softener from water hardness hard 14 °dH upwards. Contains organic sunflower oil soap and pure organic essential lavender oil. Vegan.

□ Ingredients: soap from rape-seed*/sunflower* oil, sugar surfactants, coconut oil alcohol sulphate, vegetable alcohol (ethanol), sulphated castor oil, natural essential lavender* oil (contains linalool*), citrate, gurjun balsam, balsamic additives*, swirled water (*certified organically grown/ collection from wild-growing plants)

□ Available: 120 ml (sample bottle), 2 l, 5 l, 10 l, 20 l



Component 1 in the Sonett Modular System

30–95 °C (85–200 °F)

Laundry Liquid sensitive

Part of the Product Range Sensitive for allergic people (see page 12). The Sonett Product Range Sensitive offers an assortment of first-rate organic laundry detergents, cleansing agents and products for body care containing no fragrances, dyestuffs or preservatives.

Note for people with allergies:

- No fragrances
- No preservatives
- Without colourings and complexing agents
- Without any petrochemical ingredients
- No enzymes, no GMO
- Purely vegetable surfactants
- Completely biodegradable
- Full declaration of all ingredients

□ Ingredients: soap from rapeseed*/sunflower* oils, sugar surfactant and coconut oil alcohol sulphate, obtained from coconut oil, starch and sugar, vegetable alcohol (ethanol), sulphated castor oil, citrate, swirled water (*certified organically grown)

□ Available: 2 l, 10 l, 20 l



Component 2 in the Sonett Modular System

Softener

After determining your local water hardness, add the actual amount of softener needed to the concentrated Sonett Laundry Powder (from water hardness medium upwards) and to the Sonett Liquid Detergent (in case of hard water). In that way the detergent develops its full cleansing power, the natural resources are protected and the water systems need not be unnecessarily abused. Vegan.

- Ingredients: zeolite, citrate, soda
- Available: 500 g, 1 kg, 5 kg

Washing instructions:

- Ask your local authority for the degree of water hardness in your area.
- Wash white and coloured laundry separately from each other.
- Do not overload your washing machine.
- Pour the Sonett Laundry Powder straight into the drum. Fill Sonett Softener into the detergent compartment.
- In case of white laundry, add Sonett Bleach Complex to the main washing cycle filling it into the detergent compartment.



Component 3 in the Sonett Modular System

Bleach Complex and Stain Remover

- For bleaching white laundry.
- For removing stains and discolorations from white and colourfast fabrics.
- For brightening yellowed and greyish laundry.

Without any petrochemical bleaching agents. Active in the washing machine from 50 °C (122 °F). Soaking of laundry overnight possible from 30 °C (86 °F). The most environmental-friendly alternative to the bleaching of laundry in the sunlight. Vegan.

- Ingredients: sodium percarbonate, soda
- Available: 450 g, 900 g, 5 kg

- Increase the amount of Bleach Complex to remove stains in white and colourfast laundry. Pretreat tenacious stains with Sonett Gall Soap.
- In order to descale your washing machine, use Sonett Decalcifier regularly (every 2–3 months).
- Slight regular formation of foam during the main washing cycle indicates that you are using the right amount of detergent.



20–60 °C (68–140 °F) Laundry Liquid Color Mint & Lemon

Laundry Liquid Color is suitable for all textiles made from cotton, linen, hemp, microfibers, and fabric blends. It is very effective for low washing temperatures. It gently and thoroughly washes colours and dark garments thanks to organic vegetable oil soaps and sugar surfactants used, and is suitable for all degrees of water hardness. It is unnecessary to add any softener. The Laundry Liquid is made from vegetable oil soaps and essential oils which are 100 % certified organically grown and from collection of wild plants. Vegan.

- Ingredients: soap from rapeseed*/sunflower* oil, sugar surfactants, citrate, coconut oil alcohol sulphate, vegetable alcohol (ethanol), sulphated castor oil, essential oils of litsea*, mint*, bitter orange (petitgrain)*, lemongrass* and Swiss pine* (contain citral*, limonene*, linalool*), gurjun balsam, balsamic additives*, swirled water (*certified organically grown/ collection from wild-growing plants)
- Available: 120 ml (sample bottle), 1.5 l, 5 l, 10 l, 20 l



Olive Laundry Liquid for Wool and Silk

For delicate laundry, wool and silk up to 40 °C (100 °F) to be used in the washing machine as well as for manual washing. Suitable also for cashmere. With gently cleansing organic olive oil soap, and the fine fragrance of organic lavender oil. Vegan.

- Ingredients: soap from olive* and rapeseed*/sunflower* oils, sugar surfactant, vegetable alcohol (ethanol), citrate, natural essential lavender* oil (contains linalool*), balsamic additives*, swirled water (*certified organically grown/collection from wild-growing plants)
- Available: 120 ml (sample bottle), 1 l, 10 l, 20 l

Laundry Rinse

Much as the "squirt of vinegar in the last rinse", the Sonett Laundry Rinse helps rinse out detergent residue, smooth fabrics and brighten up the colours. Vegan.

- Ingredients: pure citric acid in food quality, vegetable alcohol (ethanol), swirled water
- Available: 1 l, 10 l

Wool Care

For replenishing highly stressed woollen fabrics and for woollen nappy pants. If used regularly, Sonett Wool Care returns to woollen fabrics the wool wax necessary for their proper functioning. With organic olive oil soap, and the fine fragrance of organic lavender oil.

- Ingredients: wool wax, olive* oil soap, sugar surfactant, cetyl alcohol, vegetable thickening agent, citrate, natural essential lavender* oil (contains linalool*), balsamic additives*, water (*certified organically grown/collection from wild-growing plants)
- Available: 300 ml

Stain Removal Spray

Containing organic Quillaja, also suitable for delicate textiles of wool and silk. Very effective against fruit, cocoa, ballpoint pen and grease stains. Vegan.

- Ingredients: sugar surfactants, vegetable alcohol, vegetable glycerine*, Quillaja* extract, citrate, natural essential oils of lavender* and sage* (contain linalool*, limonene*), balsamic additives*, swirled water (*certified organically grown/ collection from wild-growing plants)
- Available: 100 ml spray flask



Liquid Gall Soap

A well-tryed liquid stain and spot remover. Helps remove stains and spots caused by grease, fruit, grass, ballpoint pen, and blood, etc. Suitable for all white and colour-fast textiles made from cotton, linen, hemp and fabric blends. On a concealed spot, test garment for colour fastness before washing it. Can be used as a wash intensifier.

□ Ingredients: soap from olive* and rapeseed*/sunflower* oils, sugar surfactant, vegetable alcohol (ethanol), bovine gall, orange-peel oil (contains limonene), essential oil of petit grain* (contains limonene*, linalool* and geraniol*), citrate, balsamic additives*, swirled water (*certified organically grown/collection from wild-growing plants)

□ Available: 120 ml, 300 ml

Gall Soap

Traditional stain removing soap, highly effective against stains or spots caused by ballpoint pen, ink, blood, grease, fruit, and so on. Suitable for all white and colour-fast textiles made from cotton, linen, hemp and fabric blends. On a concealed spot, test garment for colour fastness before washing it.

□ Ingredients: soap from palm* and coconut* oils, bovine gall,

chlorophyll, common salt, sodium thiosulphate (*certified organically grown)

□ Available: 100 g

Starch Spray and Ironing Aid

Starches and smoothes all textiles made from cotton, linen, hemp and fabric blends. It makes ironing easier even with dry and crumbled laundry. Your garments stay free from creases, dirt repellent and retain their shapes for a longer period of time. Vegan.

□ Ingredients: vegetable corn-based starch*, sulphated castor oil and soap from olive* oil as ironing lubricant, citrate, vegetable alcohol (ethanol), essential oils of rose geranium* and lavender* (contain citronellol*, geraniol*, linalool*), swirled water

(*certified organically grown)

□ Available: 0.5 l spray bottle, 1 l refill



Product Range Sensitive

Laundry care for sensitive skin,
people with allergies and
baby clothes

- No fragrances
- No preservatives
- Without dyestuffs and complexing agents
 - Without any petrochemical ingredients
 - No enzymes, no GMO
 - Purely vegetable surfactants
- Full declaration of all ingredients
 - Completely biodegradable



Blossom of the
Quillaja saponaria



Bark of the Quillaja saponaria



Product Range Sensitive for people with allergies

The Sonett Product Range Sensitive offers an assortment of first-rate organic laundry detergents, cleaning agents and products for body care containing no fragrances, preservatives or dyestuffs.

Laundry Liquid sensitive in modular system 30–95 °C (85–200 °F)

Suitable for all textiles made from cotton, linen, hemp and fabric blends. Without petrochemical surfactants, no enzymes (GMO). Use Sonett Softener from water hardness hard 14 °dH upwards. Contains organic sunflower oil soap, fragrance-free and vegan.

- Ingredients: soap from rapeseed*/sunflower* oils, sugar surfactant and coconut oil alcohol sulphate, obtained from coconut oil, starch and sugar, vegetable alcohol (ethanol), sulphated castor oil, citrate, swirled water (*certified organically grown)
- Available: 2 l, 10 l, 20 l

Laundry Powder Color sensitive with organic Quillaja 20–60 °C (68–140 °F)

Coloured and delicate fabrics made from cotton, linen, synthetic fibres

and fabric blends are washed very efficiently, the laundry powder being gentle on the colours; from as low as 20 °C. Highly concentrated and very economical in its use. With purely vegetable oils from organic cultivation, fragrance-free and vegan.

- Ingredients: zeolite, soap from vegetable oils*, citrate, sugar surfactants, sodium carbonate, silicates, sodium bicarbonate, organic Quillaja* (*certified organically grown)
- Available: 1.2 kg, 10 kg

Olive Laundry Liquid for Wool and Silk sensitive, 20–40 °C (up to 100 °F)

For delicate laundry, wool and silk up to 40 °C (100 °F) to be used in the washing machine as well as for manual washing. Suitable also for cashmere. With gently cleansing organic olive oil soap, fragrance-free and vegan.

- Ingredients: soap from olive* and rapeseed*/sunflower* oils, sugar surfactant made from vegetable starch, sugar and coconut oil, vegetable alcohol (ethanol), citrate, swirled water (*certified organically grown)
- Available: 1 l

That's how your laundry is done properly!

Separating the laundry

Filling the machine correctly

Drying the laundry

Washing down jackets and pillows

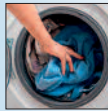
Washing sheepskins

Washing sportswear and microfibres



Separating the laundry:

- Separate your laundry according to the washing instructions on the garment's label.
- Separate dark and light clothes in order to avoid colours turning grey.
- Turn coloured clothes inside out before washing. This way, the colour stays bright for a longer period of time, and streaking is avoided.
- Make sure to empty the pockets of all coats, jackets, and trousers before washing and close the zips and buttons.
- Treat stains with Sonett Gall Soap before washing (see our tips for stain removal on page 18).



Filling the machine correctly:

Fill the machine (front loader) so that there's a fist's width between the washing and the drum. This way the detergent dissolves better, the clothes are cleaner and residues are thoroughly rinsed away.



Drying the laundry:

- Remember that hanging-up laundry is the most energy-efficient way of drying.

- Dryers should not be over-loaded and the washing should not be left in too long.
- After washing, take the laundry out of the machine as soon as possible. This is particularly important when the washing cycle is below 60°C (140 °F), as remaining micro-organisms can multiply and lead to a musty smell in the washing.
- Leave detergent drawer (front loader) and door/lid open after use for better ventilation.



Down jackets and pillows:

They tolerate washing, especially with soaps made for wool or silk garments. Important: When drying, down feathers must be shaken constantly so that they do not stick together. Unless otherwise instructed, proceed as follows:

- Select a delicate wash cycle (30°C / 85°F) and use Sonett Olive Laundry Liquid for Wool and Silk—without a softener
- Select an additional rinse cycle
- Spin-dry very gently
- Dry in a tumble dryer at a lower temperature and with a smaller load
- When drying on the washing line, materials with down feathers need to be regularly shaken.



Sheepskins:

Wash sheepskin only when airing, beating and brushing the item are no longer of any use, and the less often the better. Even washable sheepskins generally tend to become hard after washing; therefore the best way of cleaning is one which keeps the leather as dry as possible.

Unless otherwise instructed, proceed as follows:

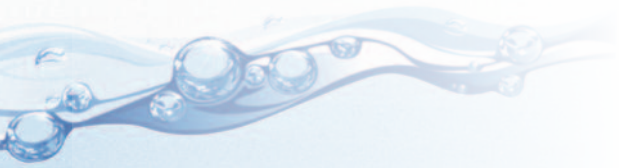
- Depending on the size of the skin, place the same size towel over the edge of a bath tub and lie half of the skin on this.
- Using the shower head and lukewarm water quickly wet the skin; avoid soaking this as much as possible. Mix Sonett Olive Laundry Liquid for Wool and Silk in a small container with approximately 5 ml of water (1 full teaspoon in 100 ml of water = 1 small yoghurt tub) and shampoo half the garment and, if necessary, treat any stains with it.
- Then quickly rinse, using the shower head and lukewarm water and 'press dry' with a hand towel. Repeat this procedure for the other half of the garment.
- Place on a clothes horse to dry and while drying, shake occasionally. Please do not place the garment in the sun or near radiators. The dried skin can then be brushed with a coarse brush and will look as good as new.



Sportswear and Microfibres such as Goretex, Sympatex, Softshell etc.:

Please read the garment's label. Unless otherwise instructed, proceed as follows:

- Select setting for a delicate (warm) wash (40°C/100°F)
- Use Sonett Washing Liquid Color, ensure that you use the correct dose
- Select additional rinse cycle
- Spin-dry very gently
- If using a tumble dryer, set at a cool temperature and use a smaller load.




Choosing the right detergent

Sonett Laundry Detergents are indicated for any kind of fabric or material, be it cotton, linen, hemp or fabric blends, wool or silk. It is especially delicate fabrics that are perfectly cared for. Sonett Laundry Liquid Color, Olive Laundry Liquid for Wool and Silk, and the Laundry Powder Color sensitive develop their washing performance at a washing temperature of **as low as 20 °C (68 °F)**.



	Laundry Powder	Laundry Liquid	Laundry Liquid Color	Olive Laundry Liquid	Laundry Powder Color sensitive
Cotton, linen hemp, fabric blends	•	•	•	•	•
Wool, silk	—	—	—	•	—
Delicate garments	—	—	•	•	•
Microfibres	—	—	•	—	—
Dark fabrics	—	•	•	•	—
Temperature range	40–95°C 100–200°F	30–95°C 86–200°F	20–60°C 68–140°F	20–40°C 68–100°F	20–60°C 68–140°F
Fragrance	without fragrance	with and without fragrance	with fragrance	with and without fragrance	without fragrance
Washing performance	+++	+++	++	++	+++
Add Softener, starting with hardness range	2 (medium)	3 (hard)	—	—	—
Bleach Complex from 50°C/122°F	•	•	•	—	•
Laundry Rinse	•	•	•	•	•

Note: The dosage indicated on the packages for laundry detergents are calculated for a 4.5 kg washing machine. Please adapt in case of larger machines.



Stain removal tips: 5 basic rules

- 1 Remove stains as soon as possible and then wash the fabric as usual (follow label instructions).
- 2 If possible, mechanically remove large stains in advance.
- 3 Treat stains outside in.
- 4 Dab stains on delicate fabrics, do not rub or brush.
- 5 Test the colour fastness on a small hidden area before treating the stain.

These Sonett Products help removing stains:

Gall Soap, Stain Removal Spray, Bleach Complex, Laundry Rinse und Orange Power Cleaner



Fruit, grass and vegetable stains

Apply Sonett Gall Soap, leave for a few minutes, rinse out and wash as normal. Please test the colour fastness of the garment on a small hidden area before treating the stain.

Grease stains

Apply some undiluted Sonett Orange Power Cleaner, leave for a few minutes and then wash out. This is ideal for removing grease stains on delicate garments. Or treat with Sonett Gall Soap or Sonett Stain Removal Spray, see above.

Felt tip and ink

Can generally be removed well with Sonett Gall Soap or Sonett Stain Removal Spray.

Milk, blood and protein stains

Thoroughly rinse out all protein stains using cold water, then, if necessary, treat with Sonett Gall Soap.

Coffee and tea stains

Pre-treat the stain with lemon juice or Sonett Laundry Rinse, rinse thoroughly and then wash as normal. Light fabrics can be washed as normal with Sonett Bleach Complex (50 °C/122 °F), without any pre-treatment.

Cocoa and chocolate stains

Spray on Sonett Stain Removal Spray and leave on to be effective for 10 minutes, then rinse or put garment straight into the washing machine.

Wax stains

Place blotting paper on the wax and carefully warm with a hair-dryer. Remove the remaining wax with a solvent. Be careful with hot irons. In this case the wax liquefies too quickly and can become fixed to the fibres.

Rust and old blood stains

Place the stain in Sonett Laundry Rinse, rinse with cold water and then wash as normal using Sonett Bleach Complex, if possible.



sonett
ECOLOGICALLY CONSCIENTIOUS

Sonett GmbH
Mistelweg 1
88693 Deggenhausen
Tel. +49 (0)7555.9295-0
www.sonett.eu



ecogarantie.eu

The Ecogarantie Label certifies:

- The use of organically grown raw materials
- Containing no enzymes of GMO
- Optimum biodegradability
- Controlled by Certisys Belgium



cse-label.org

The CSE Label stands for:

- Certified sustainable business management of the Association for Applied Business Ethics
- CSE = Certified Sustainable Economics
- Contrary to pure product certification, this label comprises the entire company. In addition to ecological product requirements, the company's social and ethical orientations are certified.



vegansociety.com

The Vegan Society Label certifies:

- No animal ingredients are contained
- Sonett does not carry out any animal experiments nor does the company give respective orders to do so.

All of our Sonett products carry the Vegan Society Label, with the exception of Sonett Wool Care, Sonett Gall Soap bar and liquid, Sonett Floor Mopping Fluid as well as BioBubbles which contain animal ingredients.



stop-climate-change.de

Stop Climate Change is the highest standard for extensive analysis and certification of CO₂

- The label certifies the analysis of the entire enterprise regarding CO₂ emissions and complete transparency as far as the processes causing CO₂ are concerned.
- The analysis proves that Sonett hardly generates CO₂ emissions due to heating and electrical energy.



Sonett has been awarded with prizes for a pioneering, smart and trend-setting design.

